

**Effortlessly Functional**

The P7 Cantilever Umbrella Series provides sunshade with the ability to customize aspects to meet the specific needs of your project. Utilizing an easy to operate functionality and a 300 degree rotating post, with several additional options this series is our most functional umbrella solution.



Choice of 1: 11.5' Round | 14' Round | 8'x8' Square | 10'x10' Square

**Effortless and customizable**

The P7 Umbrella rotates up to 300 degrees to create shade where you need it most. Easy manual operation that is extremely straightforward with the “One Move System”, which allows you to open and close with minimal effort. The stainless-steel gas spring ensures a unique level of ease.



## P7 Umbrella

### Industry/Purpose

Bar/Pub, Bistro, Café, Club, Hospitality,  
Hotel, Lounge, Lobby, Restaurant, Senior  
Living

### Use

Outdoor

### Materials

- Powder Coated Aluminum
- Dickson Sunbrella Fabric

### Wind Speeds

Beaufort Level 5

### Options & Add Ons

- 4 Frame Finishes
- 4 Base Options
- 15 Canopy Colors

### Additional Options & Add ons



Protection  
Cover



Battery Pack



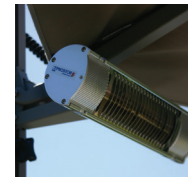
LED RGB



LED White



Sockets



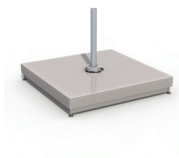
Heaters



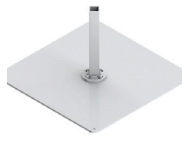
Raingutters



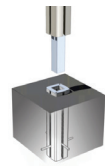
Castors With  
Breaks for steel  
base



Steel Base



Floor Plate



Ground Anchor



Wall Mount



Extended Height  
Pole

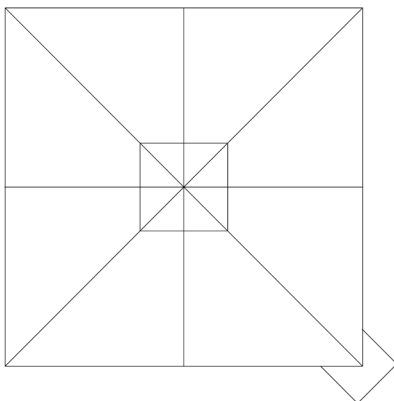


Custom Canopys



Logos

**Canopy, Frame and base options  
on last pages**



## Heaters

Heaters are available as an additional option providing warmth and extending the length of usability of your umbrella to other seasons. Each heater comes with a bracket and a single or double socket.

## Gutters

Easily connect multiple canopies together to have rain protection. The rain gutter has a conical shape, meaning that one side is smaller than the other side to make sure that the water flows away.

## LED Lighting

Lighting options are available in dimmable white or RGB Lighting, easily control with a built in button on the one-touch knob or a remote for an additional cost.

## Casters

Castors with brakes are available for the Steel Base only. Allowing you to easily move or rotate the umbrella as needed.

## Covers

This cover is a mass dyed surlast cloth in grey or black. Each protection cover comes with an easy open zipper and poles in the cover to aid in covering and uncovering. Protecting your canopies during storms or off-season storage.

## Frame finish options

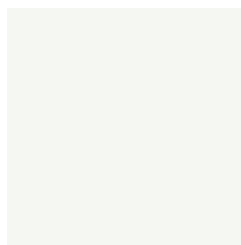
RAL Powder Coated Aluminum Frame finish options are available in four colors.



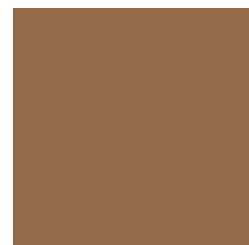
Grey



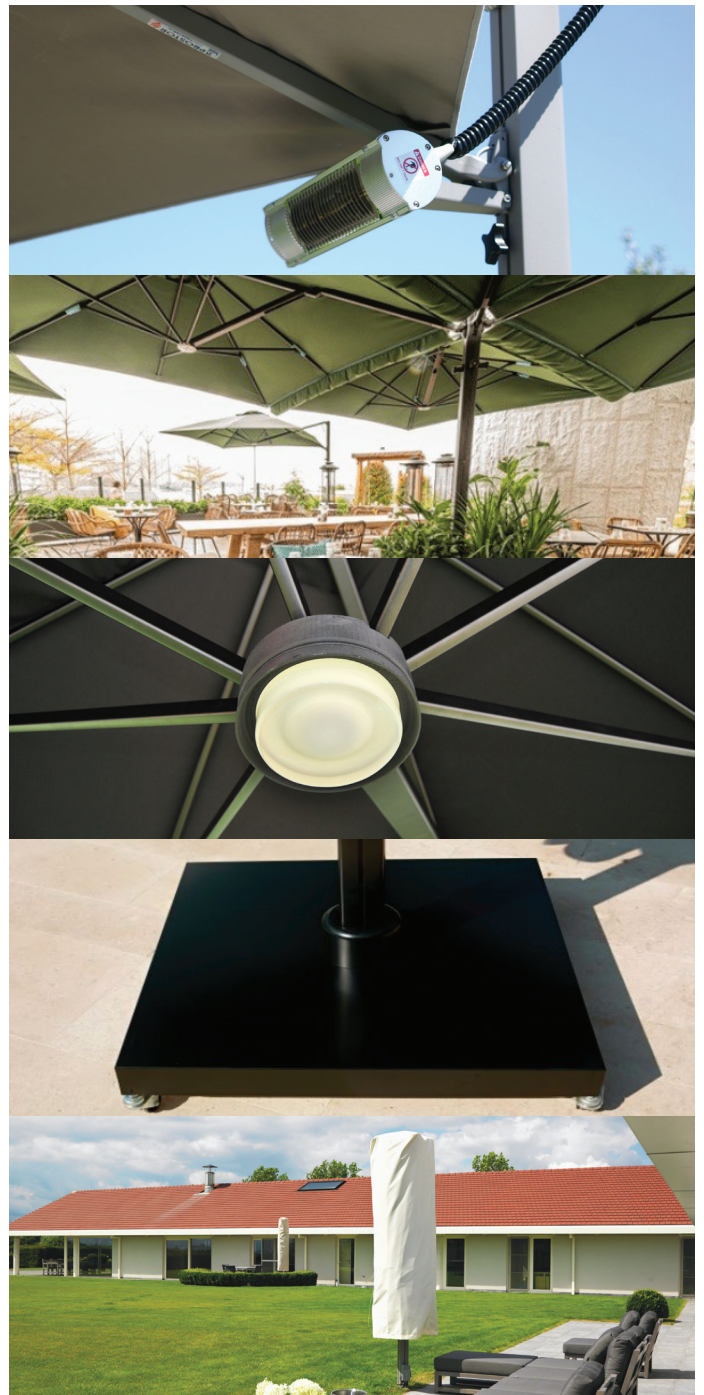
Black



White



Copper



## Canopy Colors

Fabrics are fade resistant, waterproof and resist mildew and stains. UPF 50+ filters 100% of UV rays.



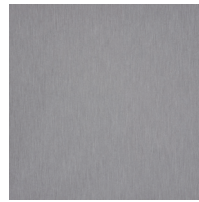
Black Widow



Buttercup



Carbon Gray



Lead Gray



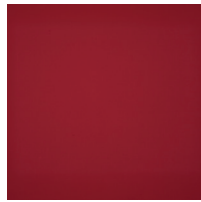
Natural White



Night Blue



Olive Green



Paris Red



Taupe



Terra Cotta



White Sand



Tweed Black  
(premium)



Tweed Gray  
(premium)



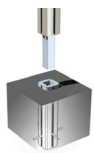
Tweed Shell  
(premium)



Tweed Toast  
(premium)

\*Custom Canopy colors available for additional fee

## Base Options



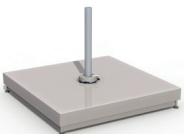
### In-Ground Anchor

Concealed inside the post ground anchor, this mount provides direct anchorage to an existing slab.



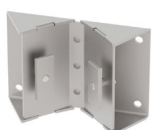
### Steel Floorplate

External ground mounts are available and give easy access to the mounting plate. This mount provides direct anchorage to an existing slab and will need to be bolted down.



### Steel Base + Cover

A weighted steel base and a steel cover. Ballast not included.



### Wall Bracket

Two wall brackets provide a sturdy connection. Only available for Uno and Duo series.